

FIRE AUDIT REPORT

Year 2022-2023



GOVT. MADHAV ARTS & COMMERCE COLLEGE, UJJAIN

Dist. - Ujjain, (M.P.) Pin code 456006

CONDUCTED BY:

SABS ENERGY ENVIRO PVT. LTD.

WE BUILD A SOLID FOUNDATION FOR SAVING ENERGY

90/2 Abhinav Nagar, Teen Emali Square, Behind Vishesh Hospital,

Indore, Madhya Pradesh -452001 India

Email Address: sabsind@yahoo.co.in, Contact number: 9826012991

CHAPTER-1

INTRODUCTION

1.1 Introduction

SABS ENERGY ENVIRO PVT. LTD. expresses sincere thanks to the management of **Govt. Madhav Arts & Commerce College Ujjain**, for inviting SABS ENERGY ENVIRO PVT. LTD. conducts comprehensive Energy Audit 2022-2023 of their Premises at Govt. Madhav Arts & Commerce College Ujjain.

1.2 Objective

The objectives of the fire and safety audit are as follows:

- a) Examine the existing fire and safety measures, procedures, system for controlling measures.
- b) Identify potential hazards which have caused or are likely to cause personal injury, property damage or loss of time.
- c) Recommend on the basis of identified hazards, changes (if any) to improve upon the existing system and procedure of work.

1.3 Methodology

The following methodology has been adopted to achieve the objectives.

- a) Actually visiting every room of college.
- b) Visiting every nook and corner of the college.
- c) Collecting all the existing fire load and safety deficiencies and positive safety areas.
- d) Preparing report based on actual finding.
- e) Presenting the same to the dignitaries in the college on a conveniently suitable day and presenting draft report.
- f) Getting suggestions. Based on the suggestions received prepare a final report and submit to the management.

1.4 Observations and recommendations

The Safety Audit was conducted by actual field visit to see the actual hazards at site in terms fire and safety of requirements and accordingly recommendations and / or suggestions wherever applicable are given against each finding.

Since the audit is based on sample inspection, recommendation given in a particular case will be the same for any uncovered area where similar situation exists.

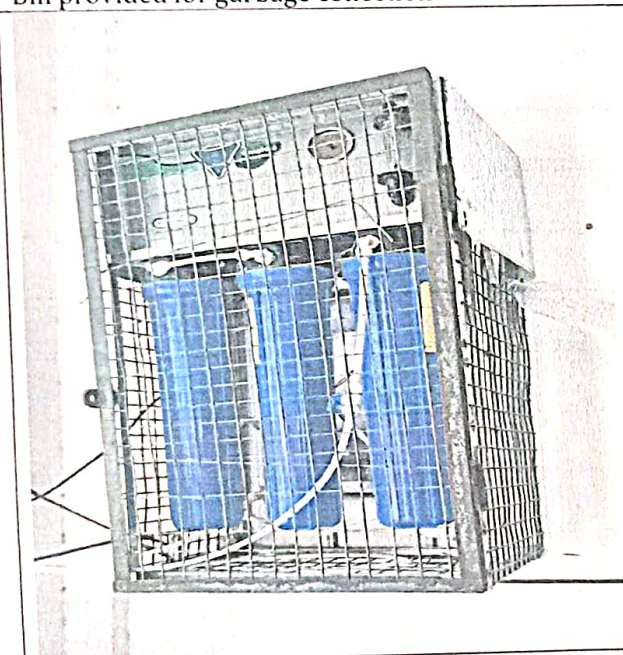
1.1 Observations and recommendations



Bin provided for garbage collection



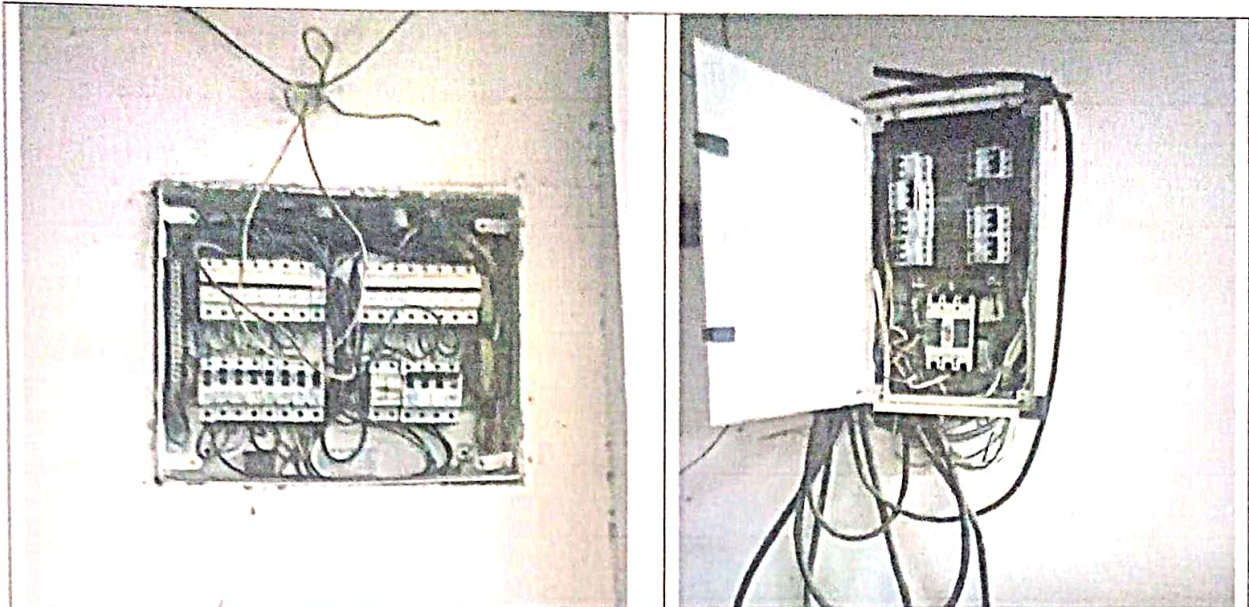
Proper Lighting Fitting & Connection for Fan



RO Filter Held up with cage

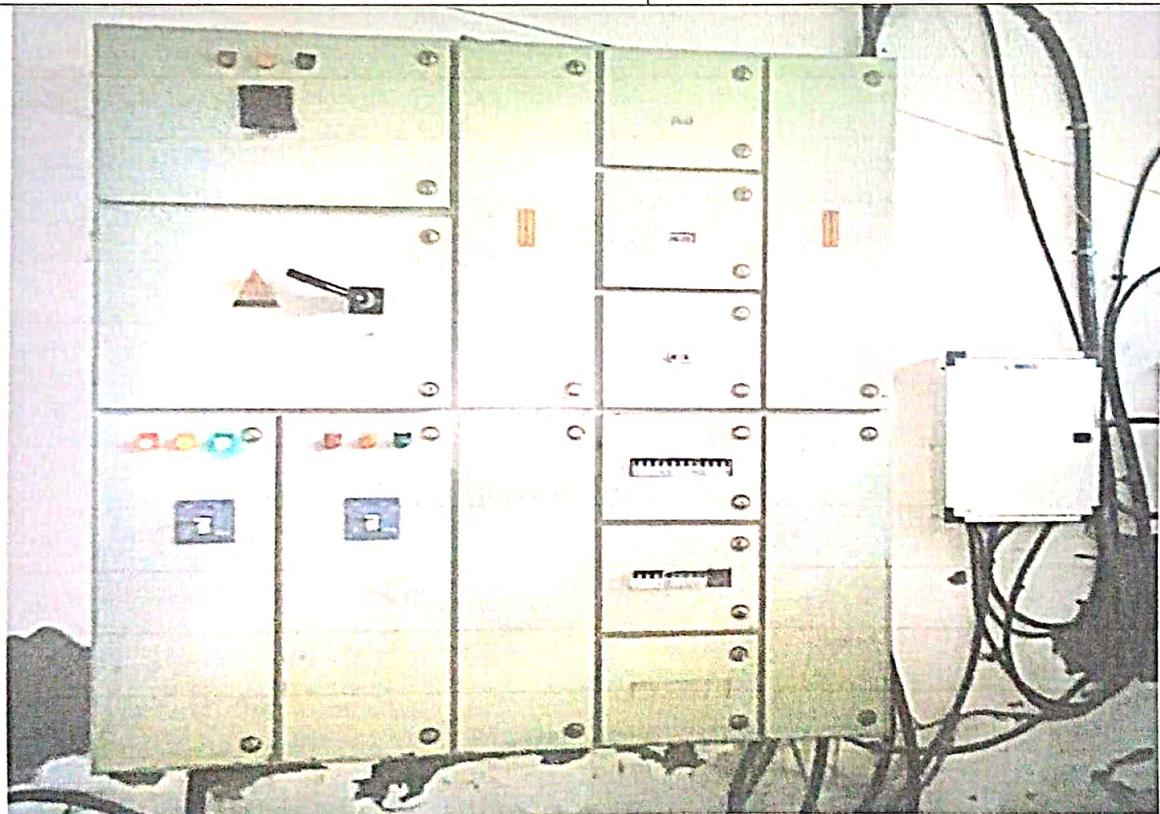


Fire Extinguisher at various location & building



Electrical Panel should be closed; Electrical Panel should never be kept open like this. Dirt, dust enters deposits and increases the resistance, draws more current, increases hazard of fire.

Electrical Panel should be closed; Electrical Panel should never be kept open like this. Dirt, dust enters deposits and increases the resistance, draws more current, increases hazard of fire.



No rubber matting is seen in any of the meter room



Area should be clean & free from dust.

FIRE SAFETY AUDIT

Auditor
Location

Mr. Abhishek Singh
Ujjain

Date-
Time-

1	Do you have the required personal protective equipment for the area	
	Yes No N/A	N/A

2	Are the aisle ways clear of obstruction	
	Yes No N/A	aisle ways are found clear

3	Are Exit sign posted clearly to identify	
	Yes No N/A	Exit sign posted during visit

4	Are all walking or working surface free of tripping/slipping hazards	
	Yes No N/A	Walking surface free of slipping hazards

5	Are emergency phone no. and the procedure at or near telephone	
	Yes No N/A	Emergency no. wall sign found

Equipment use

6	Are pinch point, sharp point and exposed moving part properly marked and guarded	
	Yes No N/A	N/A

7	Are the safe firmly secured and not easily removable	
	Yes No N/A	Yes

8	Are the safe guard are working properly	
	Yes No N/A	Yes

9	Are working area, walk and similar location free of cord creating a possible hazard to the employee			Yes
	Yes	No	N/A	

10	Is the equipment in 100% working order ?			Working
	Yes	No	N/A	

11	Have none working pieces of equipment been marked as Unusable or unsafe to use ?			N/A
	Yes	No	N/A	

Chemical in the wok area

12	Is each chemical in the work area have the Appropriate hazard warning label on it			N/A
	Yes	No	N/A	

13	Are all flammable chemical are stored in identified location			N/A
	Yes	No	N/A	

14	Are all flammable chemical are stored in flame proof cabinet			N/A
	Yes	No	N/A	

Personal protection equipment

15	Is the required protective equipment worn for area ?			N/A
	Yes	No	N/A	

16	Is hearing protection use in selected area		
	Yes	No	N/A

N/A

17	Is eye and face protective equipment used when machine or operation present potential eye or face injury ?		
	Yes	No	N/A

N/A

18	Is personal protective equipment readily available?		
	Yes	No	N/A

N/A

19	Is the requirement of use of protective equipment enforced ?		
	Yes	No	N/A

N/A

Emergency Equipment

20	Are emergency eye washes provided in the required chemical area ?		
	Yes	No	N/A

N/A

21	Are first aid supplies easily accessible ?		
	Yes	No	N/A

Yes, during visit

22	Are spill kit accessible and fully stocked		
	Yes	No	N/A

Yes

23	Are all fire extinguisher are regularly inspected on Quarterly basis		
	Yes	No	N/A

Yes

24	Are All fire Extinguisher are filled and pressurized			Yes, during visit
	Yes	No	N/A	

25	Are fire extinguisher are placed in 900 mm above floor			Installed
	Yes	No	N/A	

26	Are fire extinguisher are free from obstruction			Yes
	Yes	No	N/A	

27	Are the fire extinguisher near potential hazardous area ?			Yes
	Yes	No	N/A	

28	Is the Fire Exit door are clear from obstruction ?			Yes
	Yes	No	N/A	

29	Is manual call point (MCP) for raising Emergency issue is instilled in facility			N/A
	Yes	No	N/A	

Electrical

30	is there any visible damage cable in area ?			NO
	Yes	No	N/A	

31	Are all connection are made through rated ELCB/MCB ?			Yes
	Yes	No	N/A	

32	Are all equipment are well earth ?			Yes
	Yes	No	N/A	

33	Is Emergency power back up System is available		
	Yes	No	N/A

Yes

Assembly point

34	Is there dedicated identified Assembly point institute		
	Yes	No	N/A

NO

Fire detection system

35	Is facility is equipped with fire / Smoke Detection System		
	Yes	No	N/A

NO

36	Is monthly inspection of fire / smoke detection is been carried		
	Yes	No	N/A

NO

Storage

37	Is storage of material is having 18" clearance from ceiling		
	Yes	No	N/A

N/A

38	Is self-supporting ladder is available for any height work like taking material from rack etc.		
	Yes	No	N/A

N/A

Waste Disposal

39	Is facility having Bio Medical waste authorization		
	Yes	No	N/A

N/A

40	Is Facility having tie up with Authorize bio medical waste disposal facility		
	Yes	No	N/A

N/A

41	Are Waste is segregated in color bin guide line ?				Yes
		Yes	No	N/A	

Building Condition

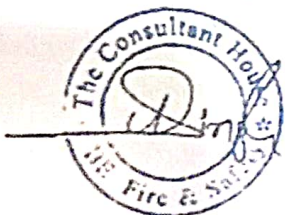
42	are there any Visible crack on wall				NO
		Yes	No	N/A	

43	Are pressure vessel like Autocue is inspected in fix interval				N/A
		Yes	No	N/A	

44	Are All cylinder are stored in identified location				N/A
		Yes	No	N/A	

45	Are Empty and full cylinder are store separately in secured manner				N/A
		Yes	No	N/A	

46	Other points				NIL
----	--------------	--	--	--	-----



FIRE SAFETY AUDIT

Govt Madhav Arts & Commerce College, Ujjain

Auditor: V. S. Kulkarni
Location: Ujjain

Date: 12-10-2023
Time:

- 1. Do you have the required personal protective equipment for the area?
Yes No N/A
N.A.
- 2. Are the aisle ways clear of obstruction?
Yes No N/A
aisle ways found clear
- 3. Are Exit sign posted clearly to identify exits?
Yes No N/A
Exit sign posted during visit
- 4. Are all walking or working surface free of tripping / slipping hazards?
Yes No N/A
Walking surface free of slipping hazard
- 5. Are emergency phone no. and procedure at or near telephone?
Yes No N/A
Emergency No. wall sign found
- 6. Are pinch point, sharp point and exposed moving part properly marked and guarded?
Yes No N/A
- 7. Are the safe firmly secured and not easily removable?
Yes No N/A
Yes
- 8. Are the safe guard are working properly?
Yes No N/A
Yes
- 9. Are working area, walk and similar location free of cord creating a possible hazard to the employs?
Yes No N/A
Yes
- 10. Is the equipment in 100% working order?
Yes No N/A
Working

Yes No N/A

N/A

Chemical in the work area

Is each chemical in the work area have the Appropriate hazard warning label on it ?

Yes No N/A

N/A

Are all flammable chemical are stored in identified location

Yes No N/A

N/A

Are all flammable chemical are stored in flame proof cabinet

Yes No N/A

N/A

Personal protection Equipment

15 Is the required protective equipment worn for the area

Yes No N/A

N/A

16 Is hearing protection in use in selected area ?

Yes No N/A

N/A

17 Is eye and face protective equipment used when machine or operation present potential eye or face injury ?

Yes No N/A

N/A

18 Is personal protective equipment readily available ?

Yes No N/A

N/A

19 Is the requirement of use of protective equipment enforced ?

Yes No N/A

N/A

Emergency Equipment

20 Are emergency eye washes provided in the required chemical area ?

Yes No N/A

N/A

Are first aid supplies easily accessible?
Yes No N/A

Yes, during visit

Are spill kit accessible and fully stocked?
Yes No N/A

Yes

Are all Fire extinguisher are regularly inspected on Quarterly basis
Yes No N/A

Yes

Are All Fire Extingulsher are filled and pressurized
Yes No N/A

Yes during visit

Are Fire Extingulsher are placed in 900 mm above floor
Yes No N/A

Installed

Are Fire extinguisher are free from obstruction
Yes No N/A

Yes

Are the fire extinguisher near potential hazardous area?
Yes No N/A

Yes

Is the Fire Exit door are clear from obstruction?
Yes No N/A

Yes

Is Manual call point (MCP) for raising Emergency Issue Is Instilled in facility
Yes No N/A

NO

Electrical
Is there any visible damage cable in area?
Yes No N/A

NO

Are all connection are made through rated ELCB / MCB?
Yes No N/A

Yes

Are all equipment are well earth?
Yes No N/A

Yes

Is Emergency power back up system Is available

Yes

No N/A

[Empty box]

Assembly Point

34 Is there dedicated identified Assembly point in hospital?

Yes No N/A

NO

Fire Detection System

35 Is Facility equipped with Fire / Smoke Detection System

Yes No N/A

NO

36 Is monthly inspection of Fire/Smoke detection is been carried.

Yes No N/A

NO

Storage

37 Is storage of material is having 18" clearance from ceiling

Yes No N/A

NA

38 Is self supporting ladder is available for any height work like taking material from rack etc.

Yes No N/A

NA

39 Waste Disposal

Is facility having Bio Medical waste authorization

Yes No N/A

NA

40 Is Facility is having tie up with Authorize bio medical waste disposal facility

Yes No N/A

NA

41 Are Waste is segregated in color bin guide line ?

Yes No N/A

Yes

Building Condition

42 Are there any Visible crack on wall

Yes No N/A

No

Pressure vessel like Autoclave is inspected
at interval ?

Yes No N/A

N/A

Are All cylinder are stored in identified location

Yes No N/A

N/A

Are Empty and full Cylinder are store separately
in secured manner

Yes No N/A

N/A

Other point

Nil